

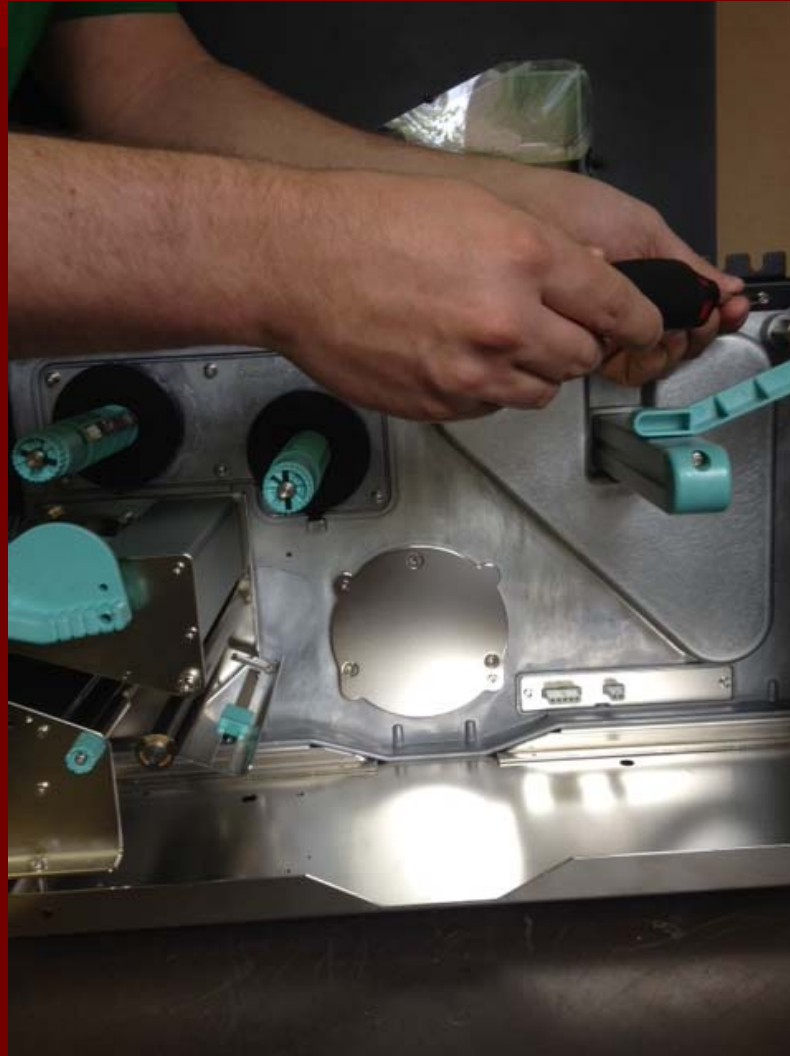
H400-H600

Label Sensor Replacement
Always Remove Power From Printer
Before You Do Any Maintenance

Remove Two Phillips Screws on Electronics Side Cover



Remove Two Phillips Screws on Electronics Side Cover



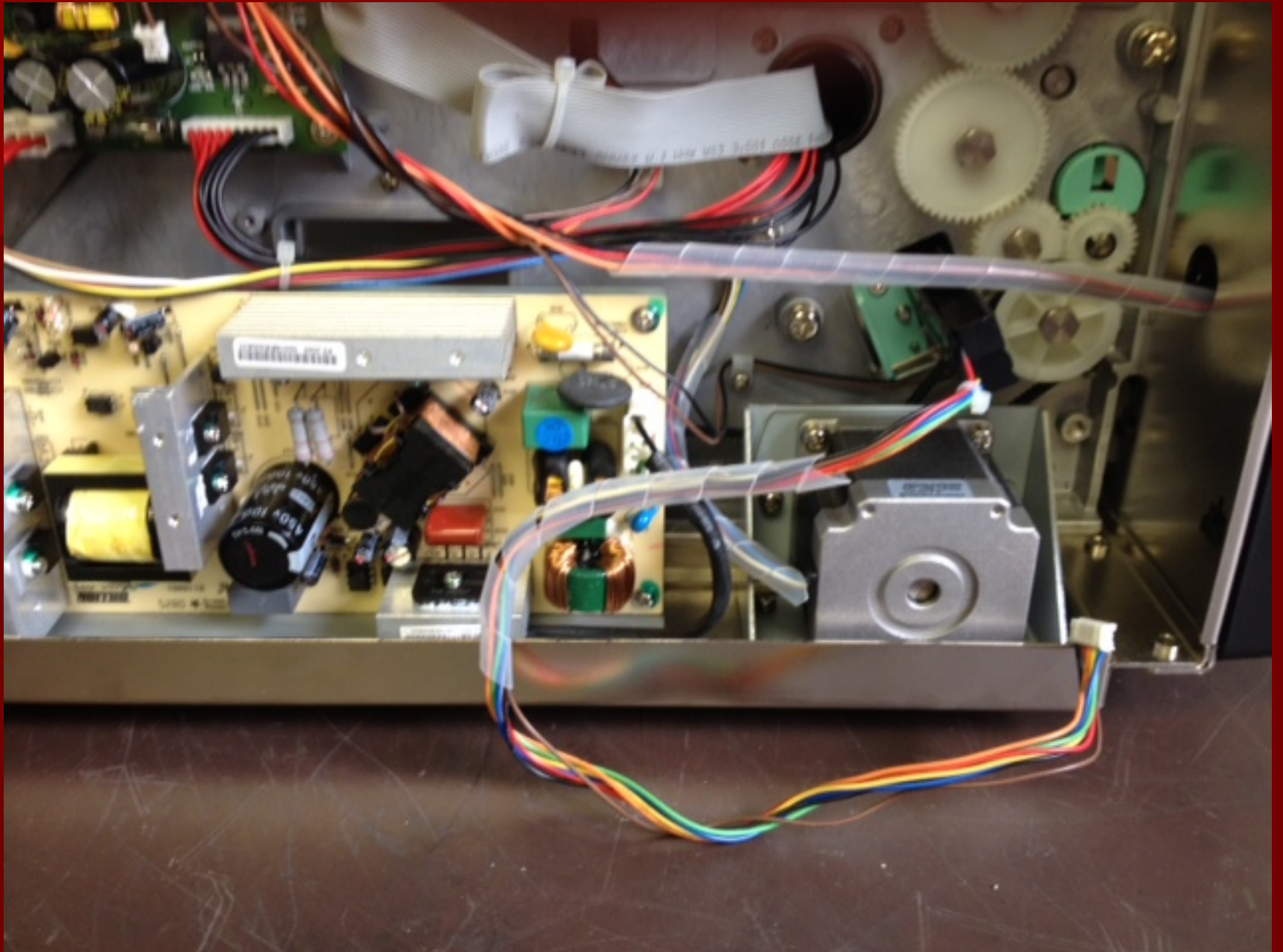


Slide Electronics Side Cover Straight Up

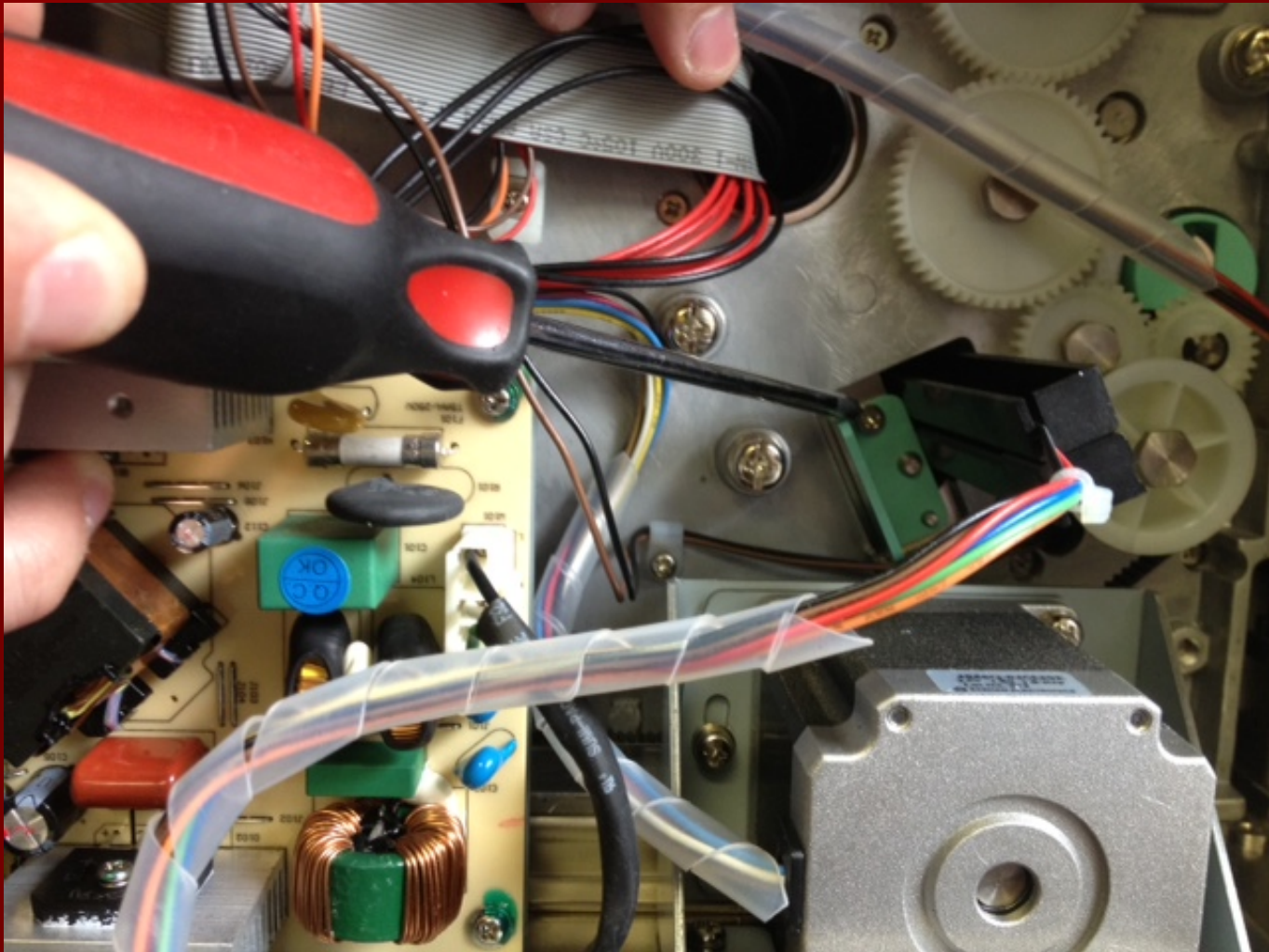


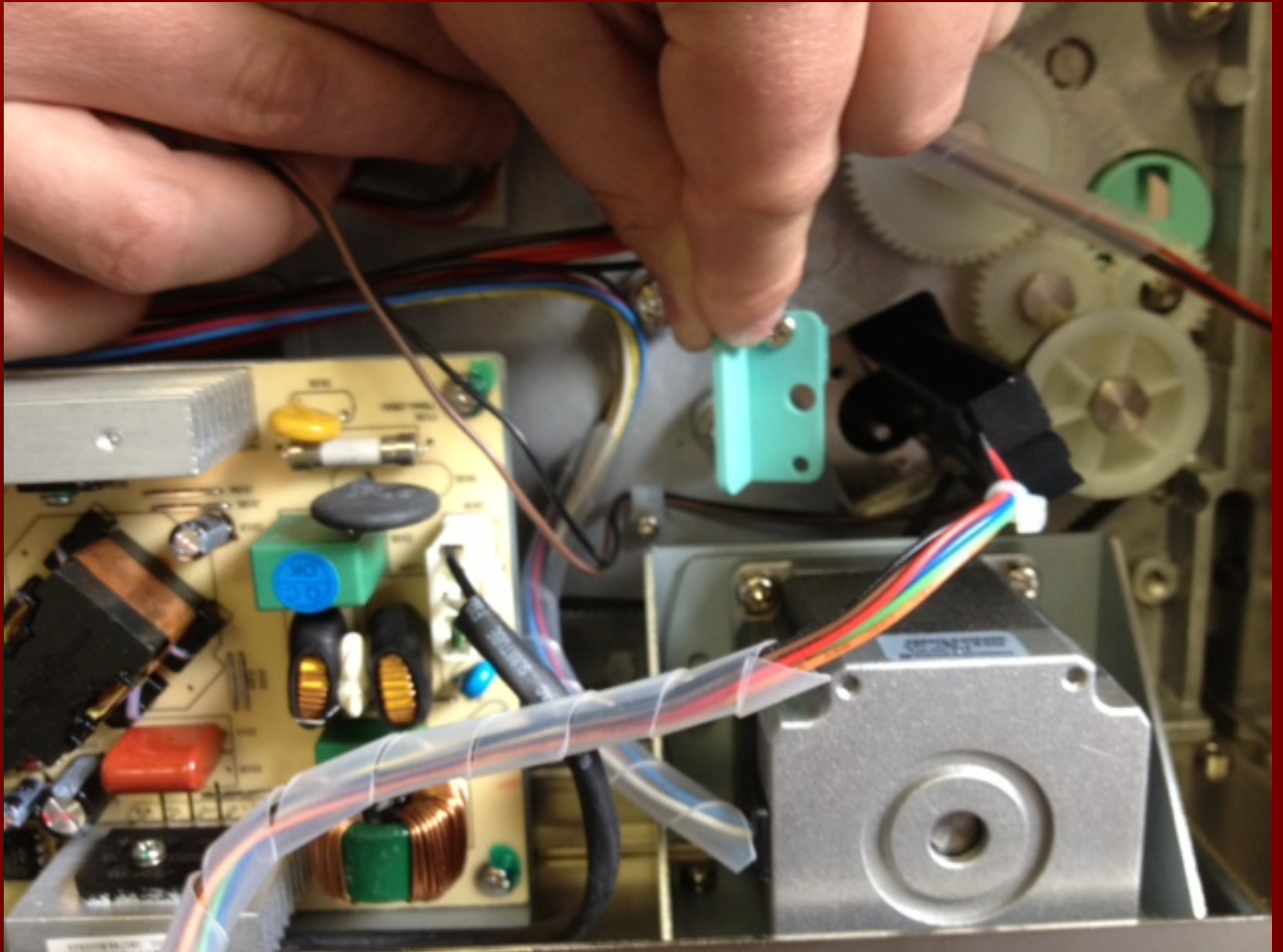
Remove Label Sensor Connection From Main PCB



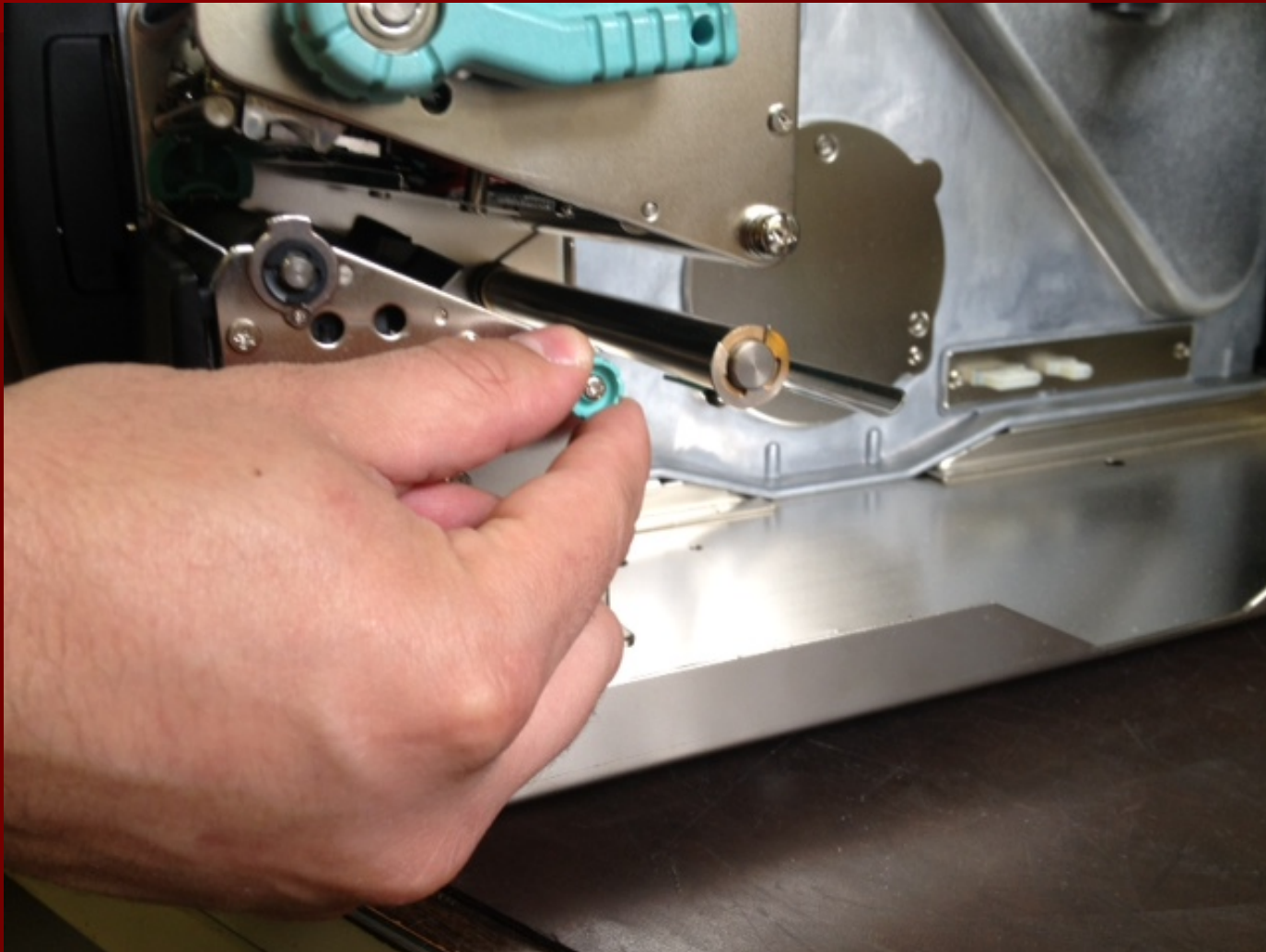


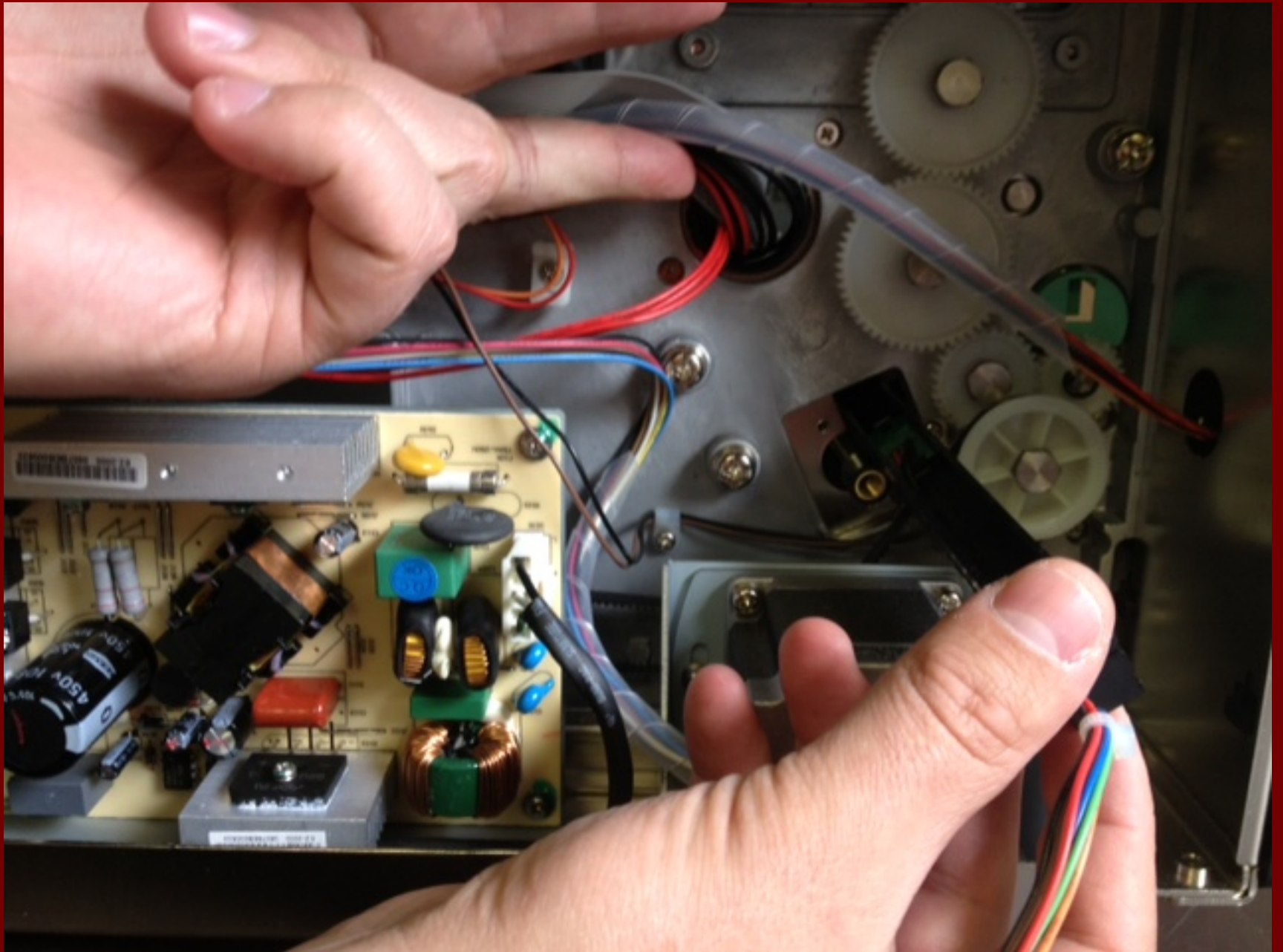
Remove Phillips Screw And Label Sensor Bracket



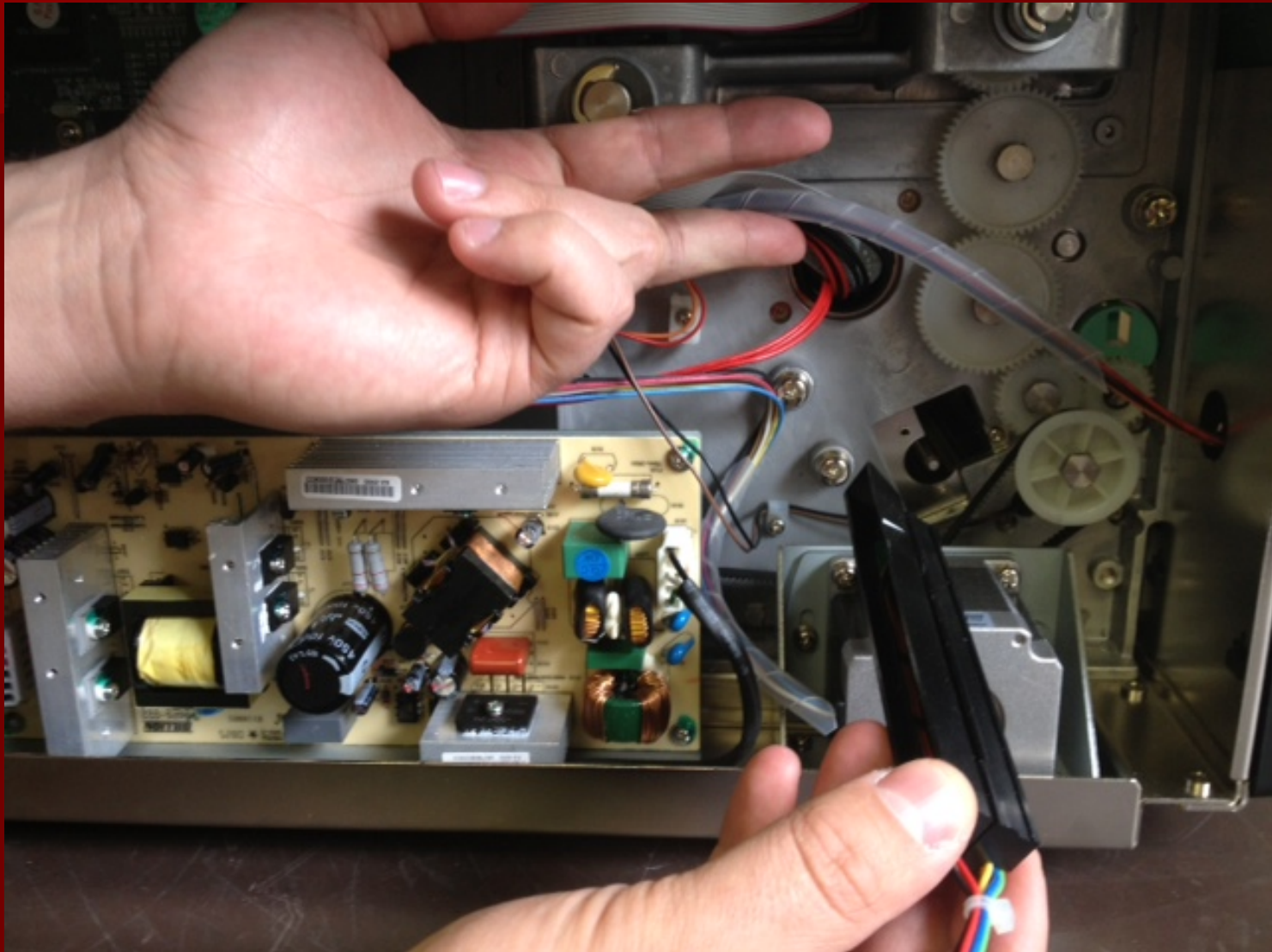


Unscrew Label Sensor Adjuster From Media Side

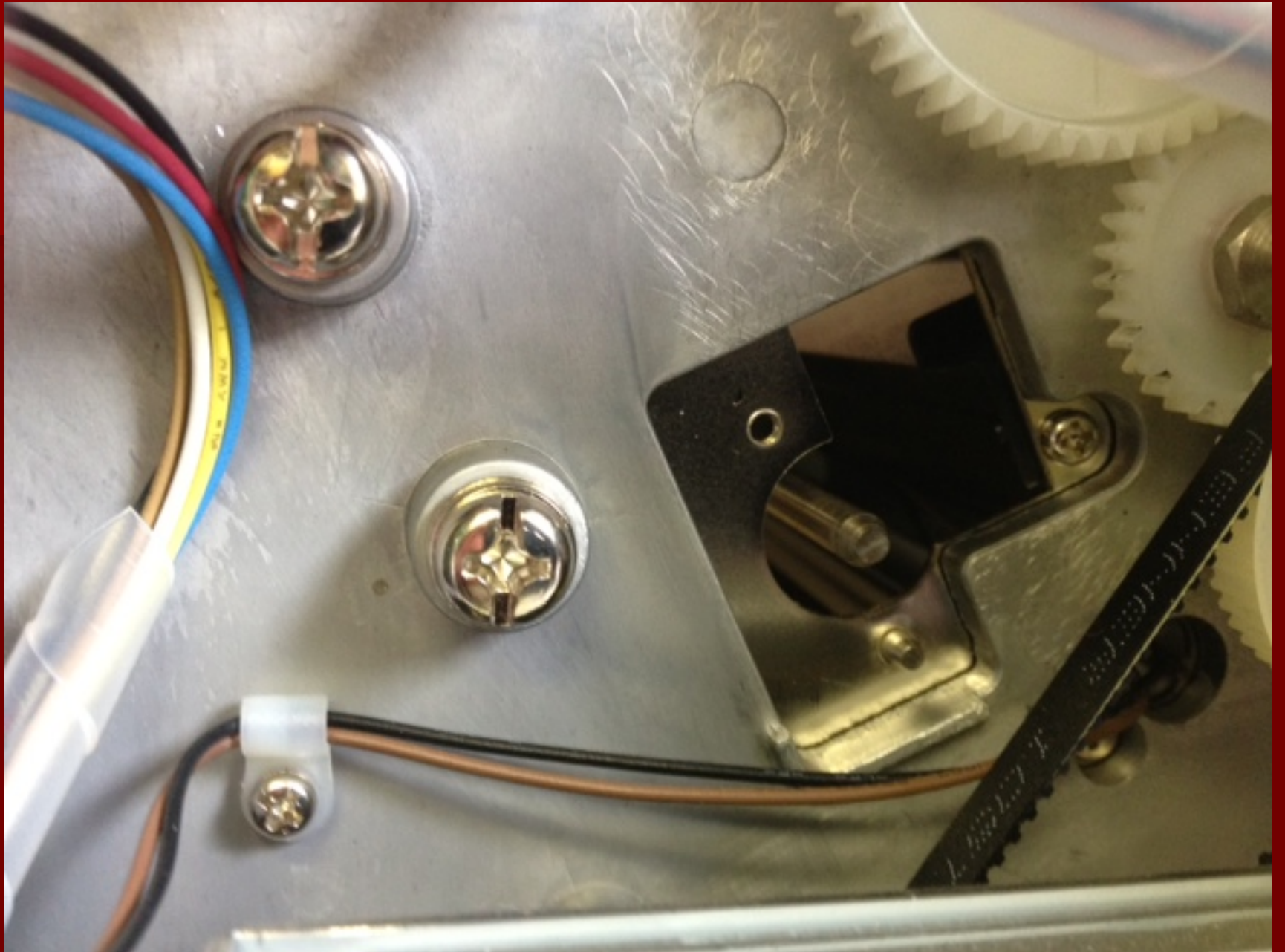




Remove Label Sensor







Reverse Instructions To Install Label Sensor

Visit easylabel.com for more information